

CANEMU CAN filter connection manual for Renault

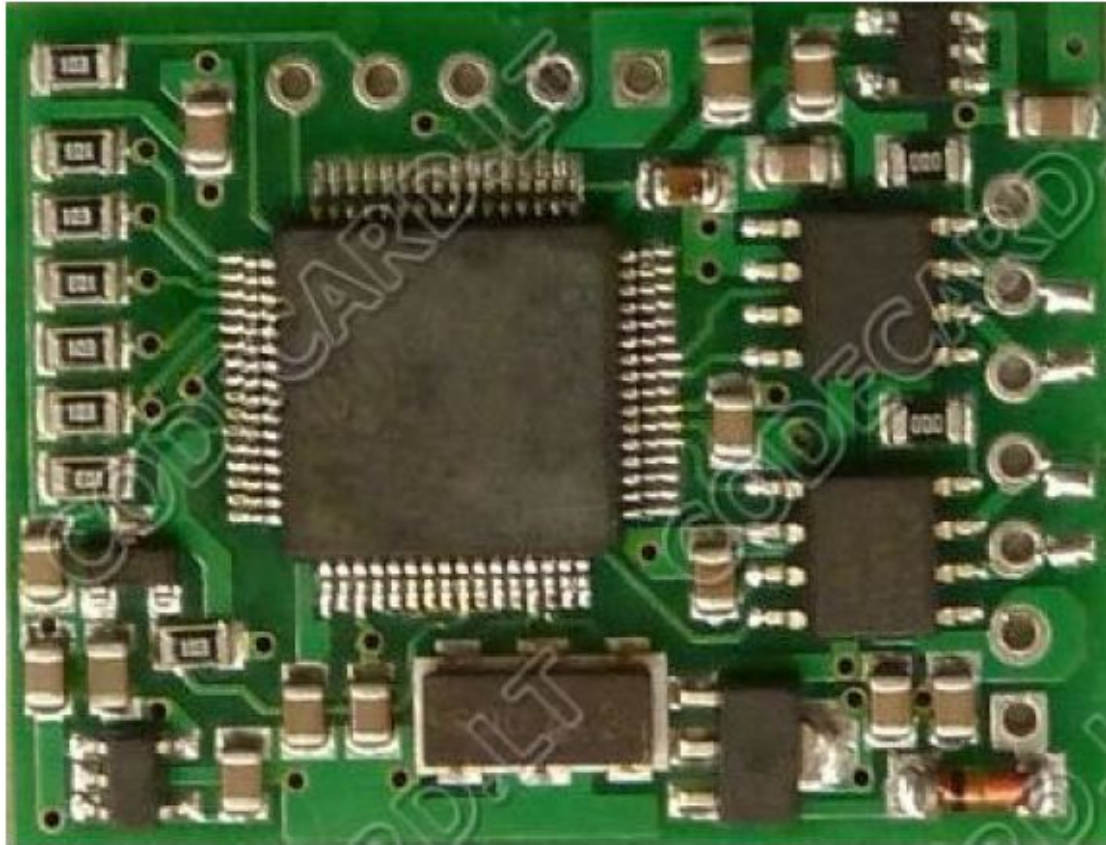
1. Renault Laguna III installation instructions



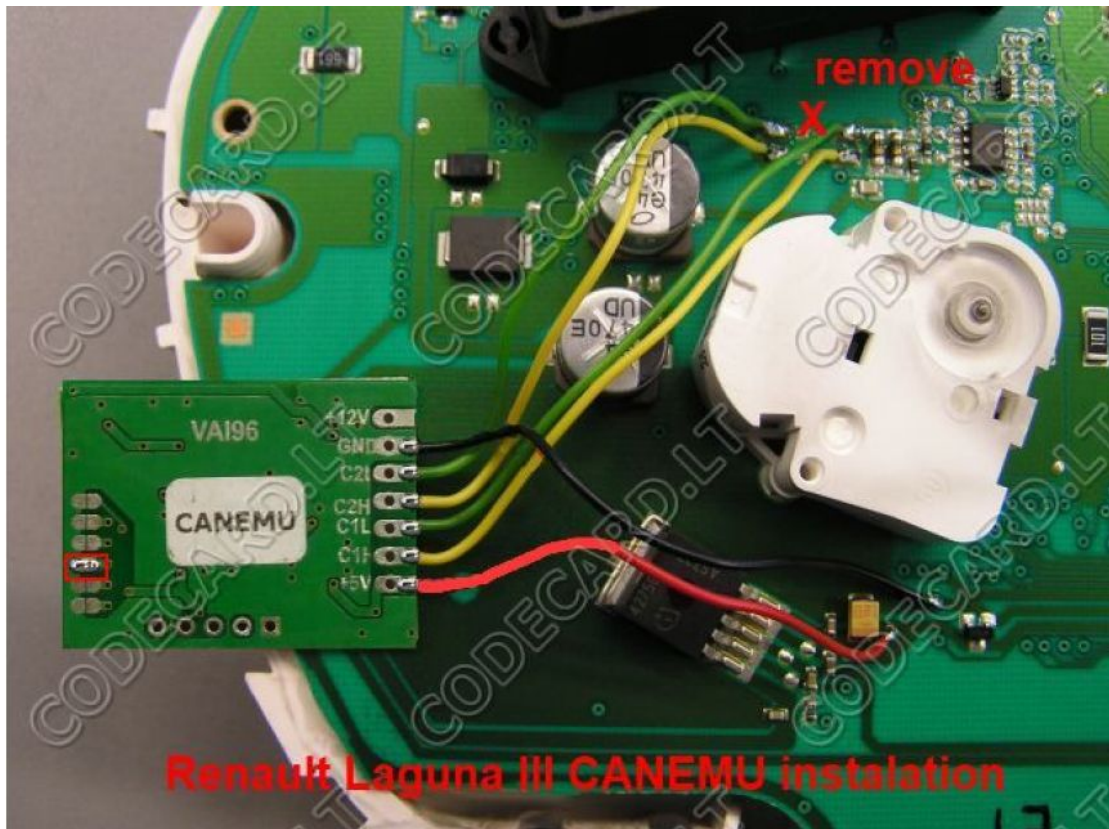
Remove instrument cluster and change mileage in 24C16 EEPROM.

- For first prepare CANEMU board: solder 3 configuration point. Use fine KYNAR wire for installation.





Install CANEMU board like in picture:



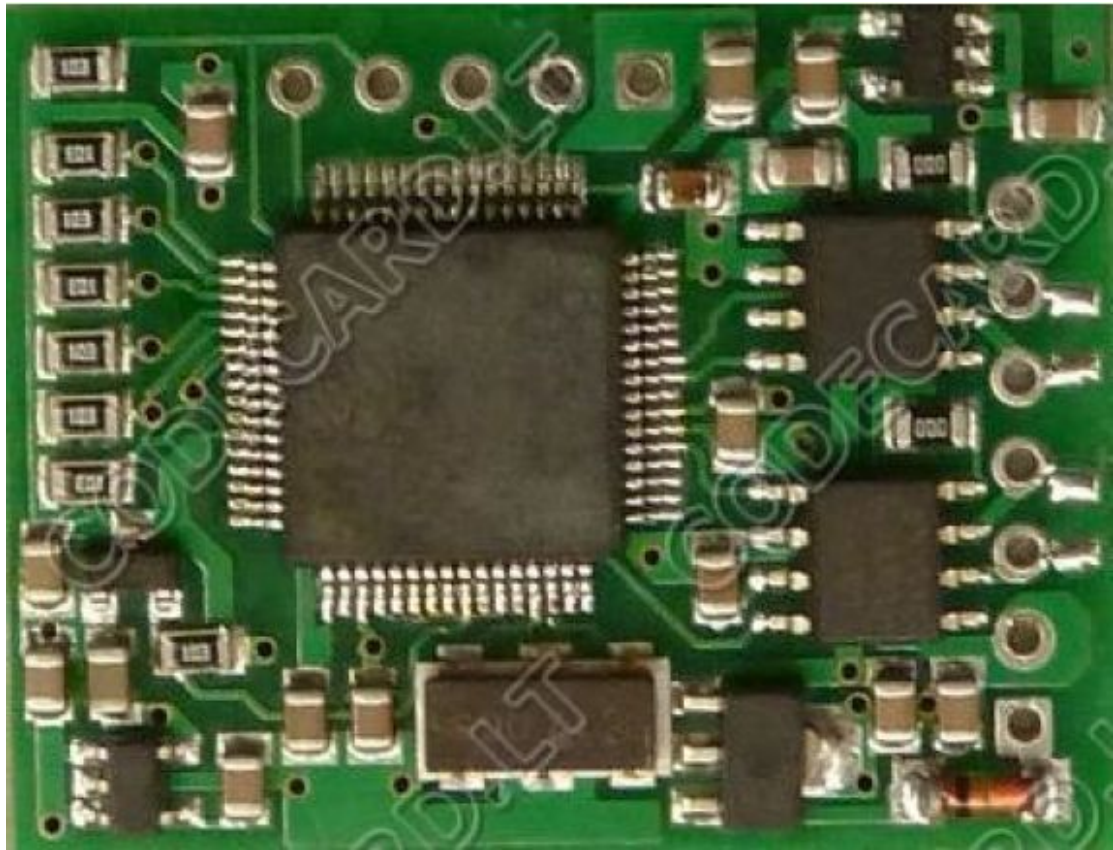
2. Renault Megane III installation instructions



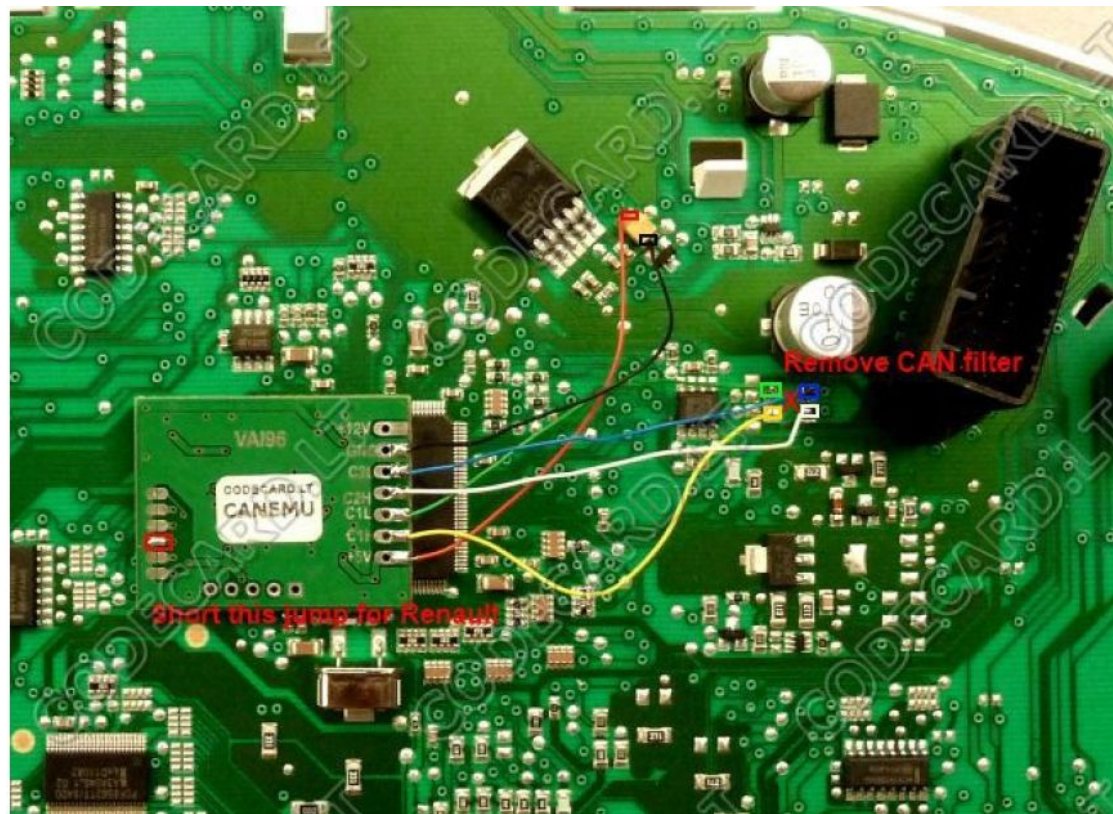
Remove instrument cluster and change mileage in 24C16 EEPROM.

- For first prepare CANEMU board: solder 3 configuration point. Use fine KYNAR wire for installation.





Install CANEMU board like in picture:



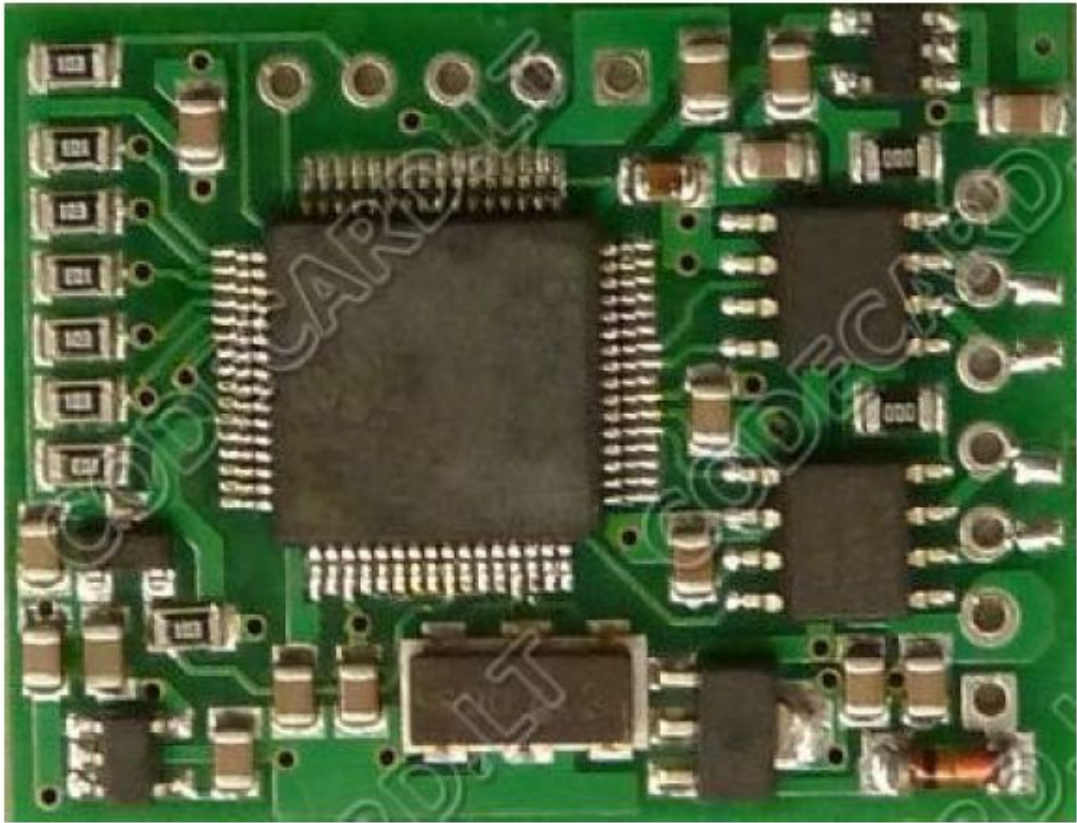
3. Renault Scenic III installation instructions



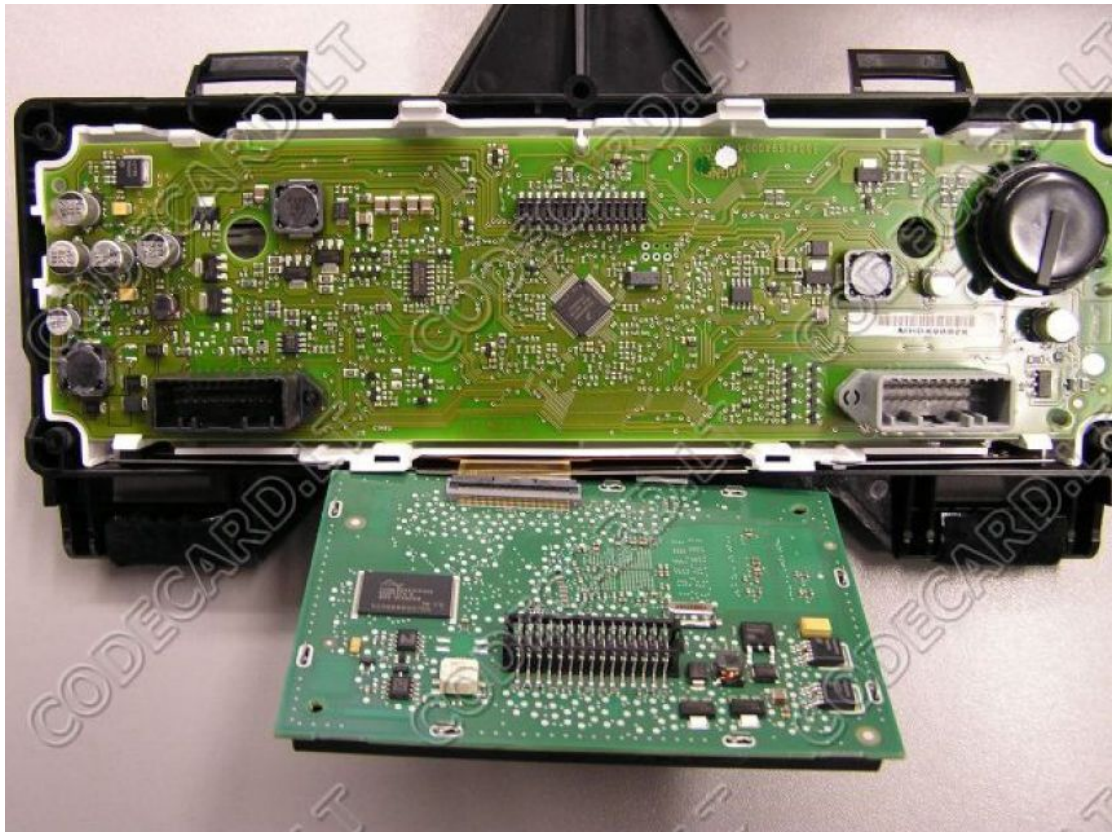
Remove instrument cluster and change mileage in 24C16 EEPROM.

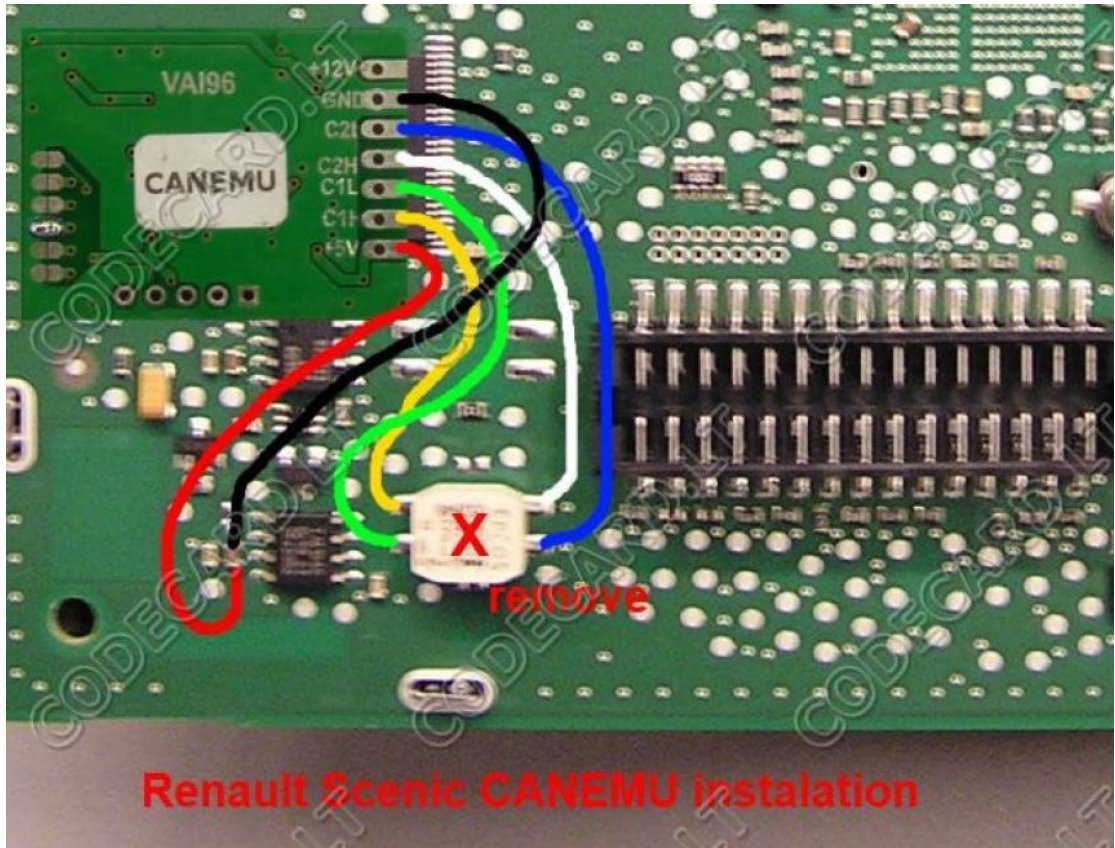
- For first prepare CANEMU board: solder 3 configuration point. Use fine KYNAR wire for installation.





Install CANEMU board like in picture:





Renault Scenic CANEMU instalation